



Prusa I3 - RRW Remix




Bill of materials

TABLE OF CONTENTS

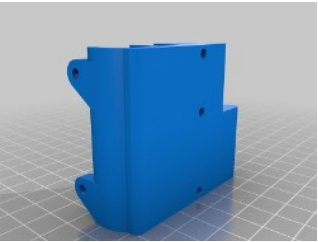
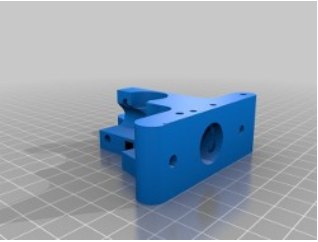
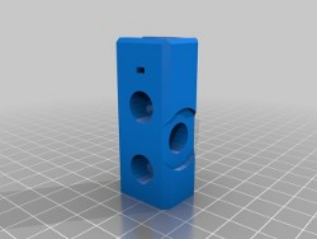
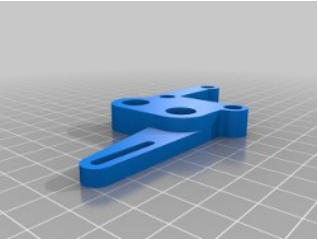

Table of contents.....	2
Bill of materials – General.....	3
Printed parts.....	4
Electronics.....	7
Megatronics kit only.....	9
Minitronics kit only.....	10
Mechanical.....	11
Extruder.....	13
Bill of materials – Heated bed.....	14
Bill of materials – Supplies.....	15



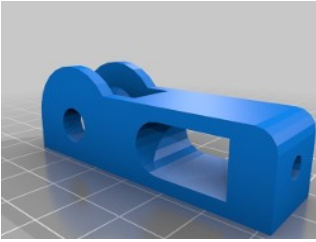
BILL OF MATERIALS – GENERAL

Item	Contents
	Prusa I3 – printed parts
	Prusa I3 - Frame This is a shiny aluminium frame for the single plate i3 version. It is milled from 6mm thick aluminium and comes ready to use with m3 threads.
	Prusa I3 studs and bars kit All rods required to build the I3

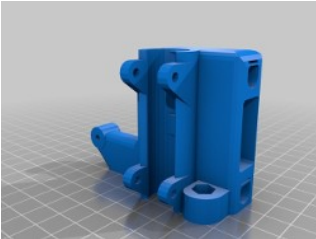
PRINTED PARTS

Item	Contents
	X-carriage
	Greg's wade extruder body (J Head)
	Y corner (4x)
	Y motor mount
	X end

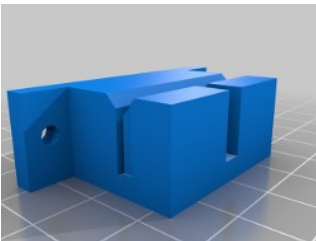




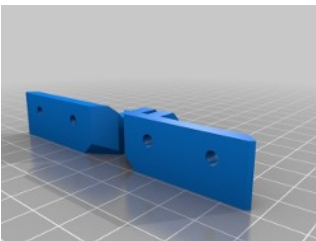
Y idler



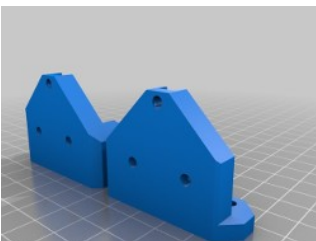
X Motor mount



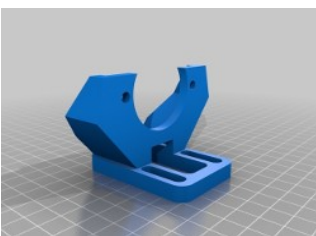
Y belt holder



Z top mount (2pcs)

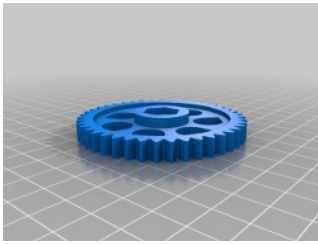


Z bottom mount (2pcs)

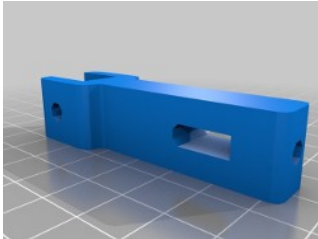


Adjustable extruder body mount

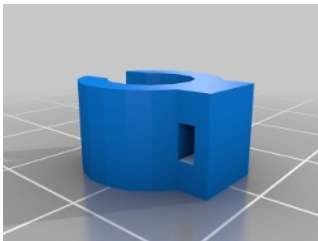




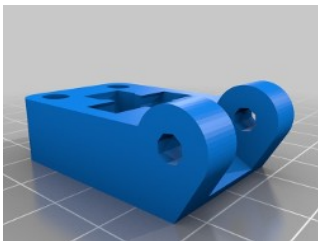
Wade gear large



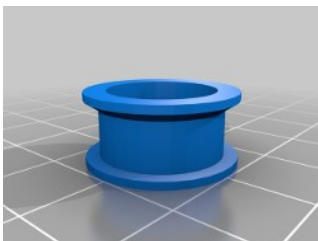
X idler



Endstop clamp (3x)



Idler for extruder body



Pulley 624Z



Item	Contents
	NEMA17 Stepper motor 1.8 degrees step / 4.8 kg/cm (4x)
	Heater wire 18A (2m red, 2m black)
	Power supply S-250-12 (240/115V / 20A MAX) Normal PSU to fit most 3D printers
	Power 240W Current (12V) 20A Current (5V) - Dimensions 140 x 240 x 60 mm Input 230 V / 115V Power cable 1.8M



USB cable



Miniature microswitch



2-wire cable, Red Black (1m) (4x)



4-wire cable, Red Blue Green Black (1m) (5x)



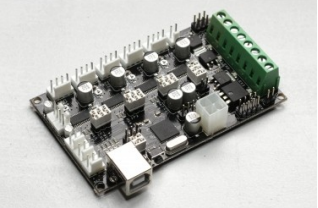
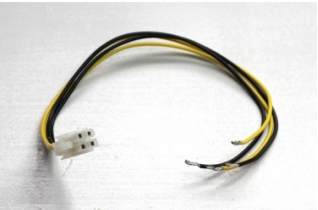

Heatshrink Black 20cm, 1.5mm bore, 0.5mm shrunken (2x)



Megatronics kit only

Item	Contents
	Megatronics v2.0
	Stepstick A4988 (4x)
	Heatsinks for pololu / stepstick stepper drivers (set of 4)
	Thermal glue / heatsink plaster

Minitronics kit only

Item	Contents
	Minitronics v1.0
	4-wire cable with ATX connector (50cm)
	Axial Fan 40x40x10mm 12V



MECHANICAL

Item	Contents
	M3 10mm screws (30x) M3 25mm screws (9x) M3 30mm screws (4x) M4 20mm (5x) M4 30mm (2x) M8 30mm (1x)
	M3 Nut (13x) M4 Nut (3x) M4 Nylon lock (2x) M5 Nut (2x) M8 Nylon lock Nut (1x)
	M10 Nut (36x) M3 washer (14x) M4 washer (12x) M8 washer (2x) M10 Washer (36x)
	LM8UU Linear Ball Bearing Slide Bush Bushing (10x)
	Bearing 624 (1x) Bearing 608 (1x)

Tie-wraps (15x)



Pulley t2.5 (2x)




Timing belt t2.5 (2x)



Z-axis Motor coupling M5 (2x)



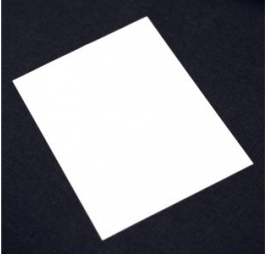

EXTRUDER

Item	Contents
	<p>Complete J Head extruder set (3MM)</p> <p>Plastic parts already included in the plastic parts kit.</p>

BILL OF MATERIALS – HEATED BED

Item	Contents
	Heated bed MDF plate (1x)
	Heated Bed clips (2x)
	Heated bed PCB
	Compression springs (4x)
	Heated Bed glass (Borosilicate) 200x200x3mm (1x)

BILL OF MATERIALS – SUPPLIES

Item	Contents
	Print sticker A4 (1pcs)
	Kapton tape - 8MM/33M