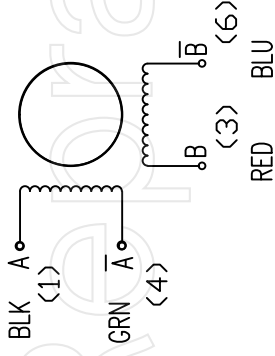
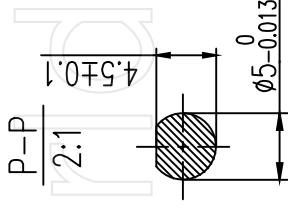


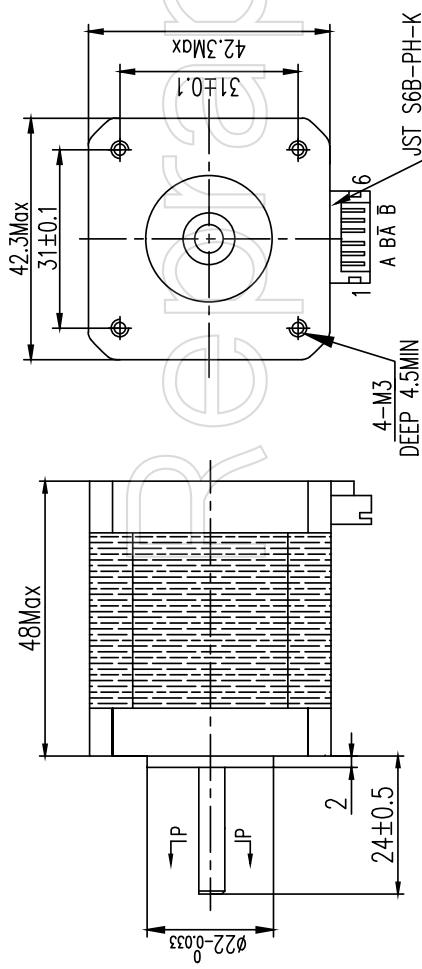
Wiring



Shaft

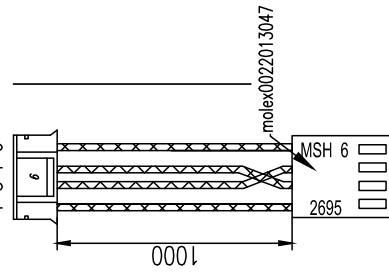


Dimensions (mm)



Specifications

Phases	2	PHASE	COMMENT
Step Angle	1.8±5%	°/STEP	1 3 4 6
Voltage	2.7	V	
Current	1.8	A/PHASE	
Resistance	1.5 ±10%	Ω/PHASE	
Inductance	3.2 ±20%	mH/PHASE	
Holding torque	50	N.cm	
Detent torque		N.cm	
Insulation class	B		
Wiring	AWG26	UL1007	



# NEMA17 Stepper motor / 1.8° step / connector / flat



ReprapWorld.com  
info@reprapworld.com

Version 1.0  
Date 05/12/2018  
Author Bart Meijer